

## **GEO***classifier*

**Remote sensing toolbox** for segment-based  
Land Use/Land Cover and Change monitoring



**Available as standalone and ArcGIS integration:**  
**The Land Cover Toolbox contains functions for**  
**segmentation, classification & change mapping.**

- Geometric correction
- Radiometric adaptation
- Index calculation (e.g. NDVI, MNDWI)
- Image segmentation
- Supervised segment based classification  
(Land Use / Land Cover mapping)
- Change / no-change masking
- Change labeling
- Analysis of classification and change results
- Indicator calculation

**Delivered with:**

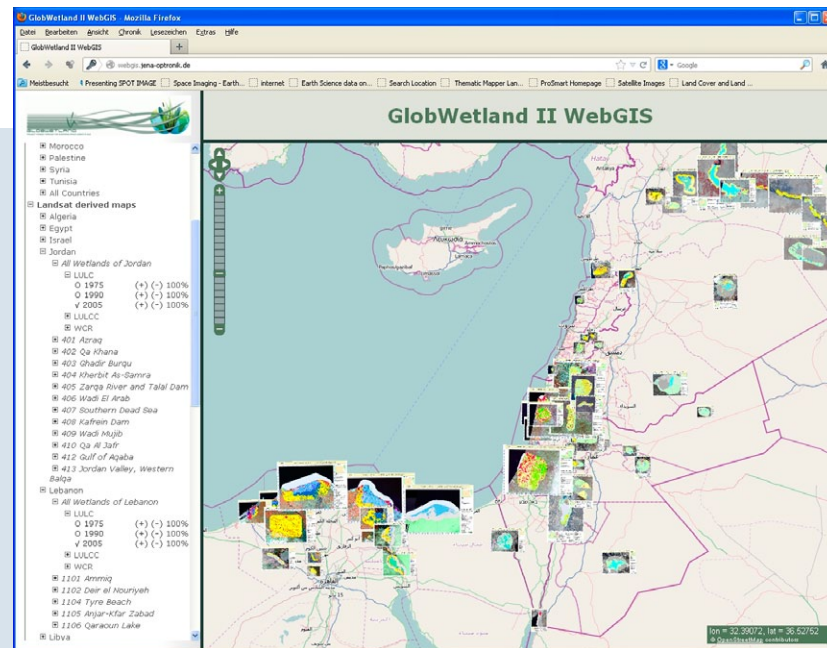
- User manual
- Training and capacity building
- Support and technical assistance
- On-site installation

GEO*classifier* is used in 15 countries in Northern Africa,  
Europe and Middle East.



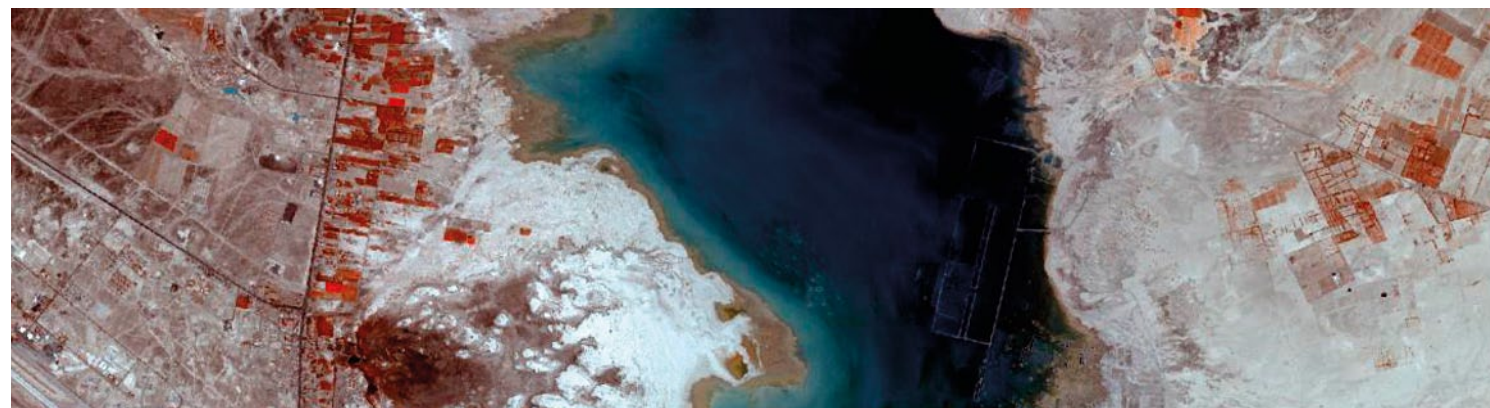
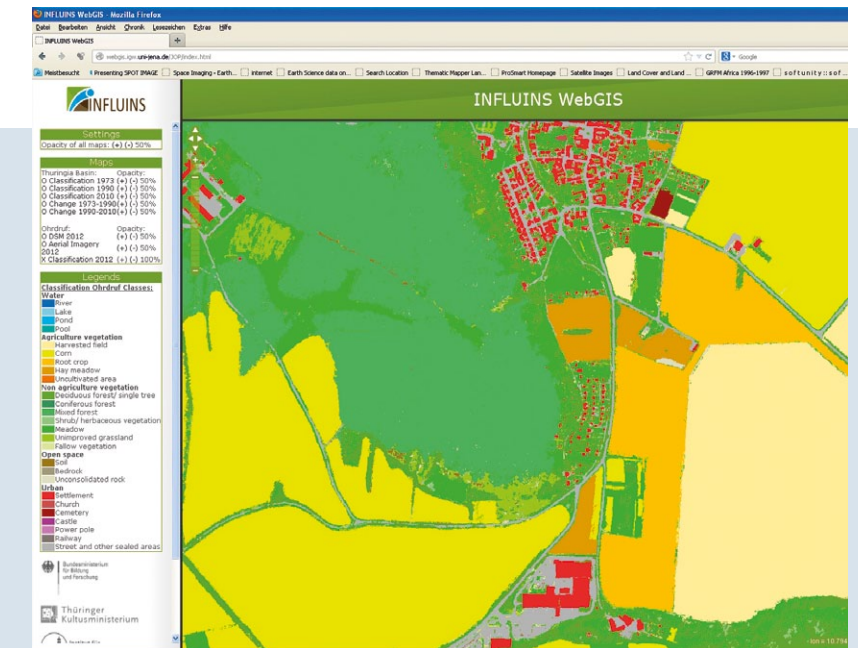
## GEOclassifier results project GlobWetland II

**350 Wetlands**  
**more than 3000 wetland maps and 1200 indicators**  
**4200 satellite images**  
**classification accuracy of more than 90%**



## GEOclassifier results project Inluins

**Land Use / Land Cover Mapping of**  
**84 Aerial photographs**  
**25 classes**  
**classification accuracy of more than 95%**

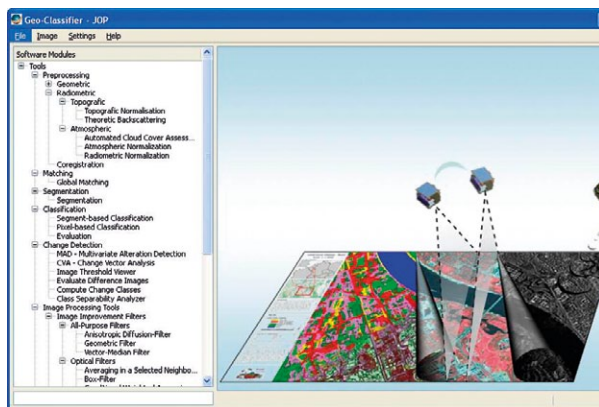
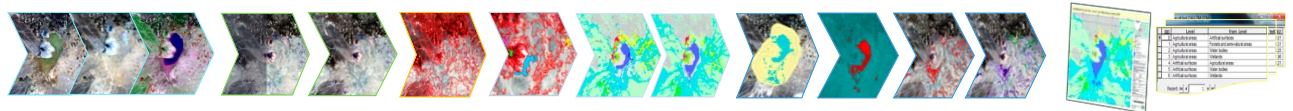


Through the eyes of Jena Spaceborne Scanner JSS 56 onboard of RapidEye. Composed of five identical Earth observation satellites this worldwide unique constellation, is equipped with one multi-spectral imager from Jena-Optronik on each satellite.

The imager of Jena-Optronik enables the precise data acquisition of an 77 kilometres wide strip of land with a pixel size of 6.5 metres out of 630 kilometres orbit height. The RapidEye data is used for the mapping with Geo-Classifier.

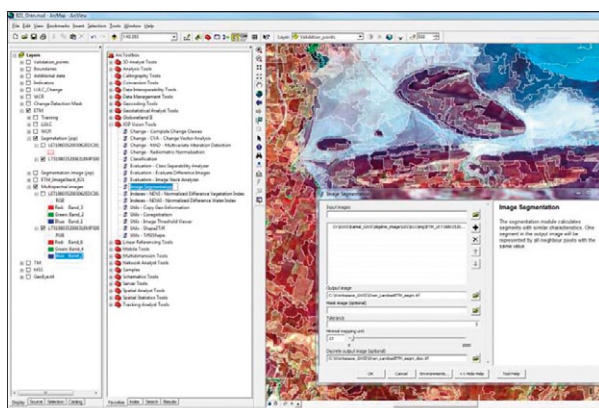


## GEOclassifier specification



### Available as standalone and ArcGIS integration:

- Quick installation without administrator rights
- Available for Windows 7 and XP, ArcGIS 9.3 and 10.x
- Available Training program - easy to learn
- Large area processing - transfer of land cover signatures, workflow integration and batch capability
- Wide usability for all land cover applications
- Support of free available data for cost effective status and trend mapping
- Specific extension for wetland monitoring



### Fully integrated into ArcGIS environment.

- ArcGIS Toolbox menus
- Backup of parameter settings
- ArcGIS Tool help: detailed description of all parameters, tool tips
- Command line input
- Batch processing capability
- ArcGIS modeler support
- Progress and status information
- Comprehensive error and warning messages